

NOXION®



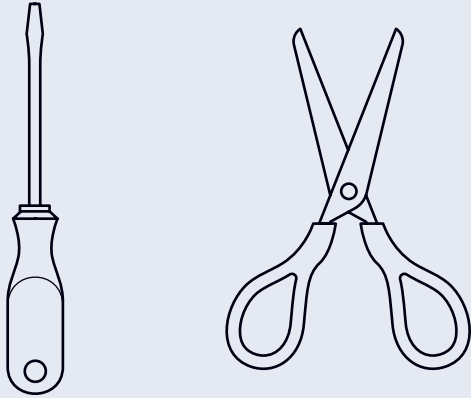
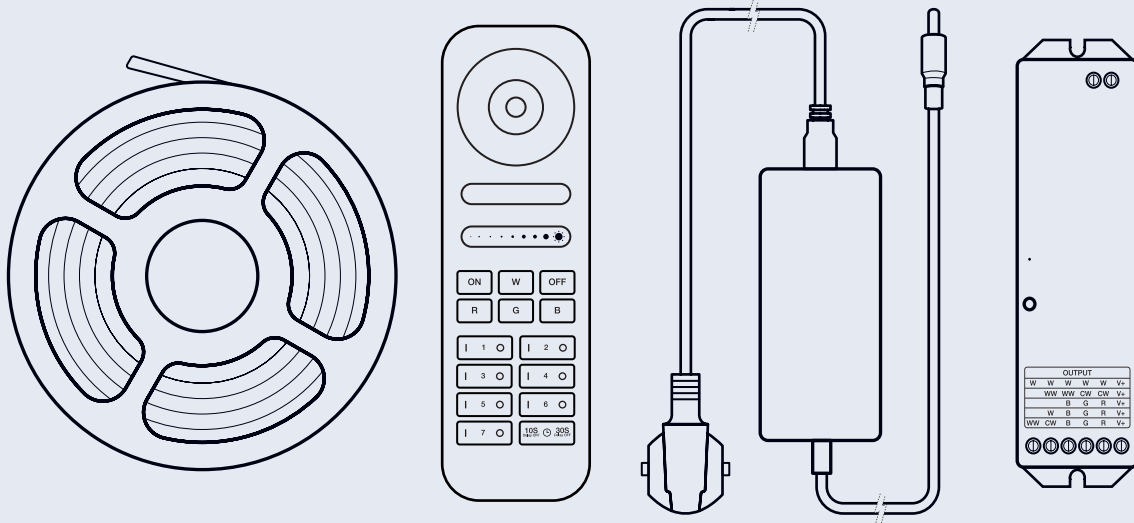
Installation Manual

Compatible with this Noxion Naga Zigbee set (EAN)
8719157055864

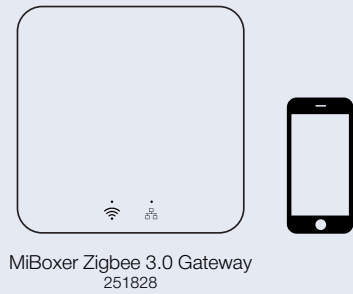


*Requires compatible Zigbee 3.0 gateway for integration

This manual provides step-by-step instructions for the installation and connection of your LED-strip. Follow the steps carefully to ensure a correct and safe installation.



Optional Extension



IP Rating and Installation Environment

Ensure that the IP rating of the LED strip is suitable for the environment in which you plan to install it. For example, use IP20-rated strips in dry indoor areas and IP65-rated strips in damp environments. An incorrect IP rating can lead to damage or hazardous situations.

Working with Electricity

Always turn off the power before beginning the installation to prevent the risk of electric shock. Use insulated tools and follow applicable safety guidelines when working with electrical components.

Inspect Components for Damage

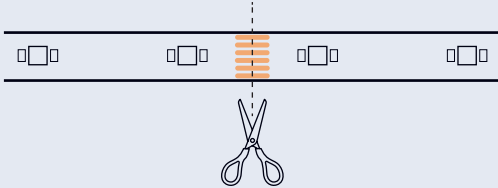
Examine all parts, such as the LED strip, power adapter, and connecting cables, for any damage before starting the installation. Damaged components can lead to malfunctions or safety risks. By observing these precautions, you ensure a safe and durable installation of your LED strips.

1 Unroll the LED Strip



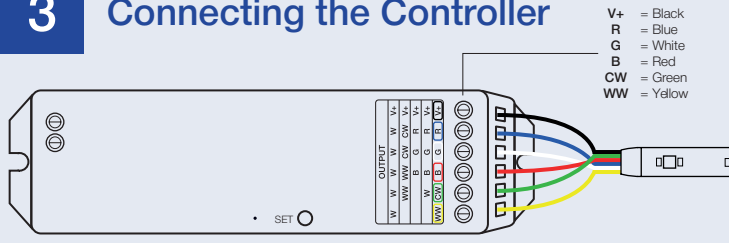
Unroll the LED strip completely to prevent heat buildup.

2 Cutting the LED Strip to Size (OPTIONAL)



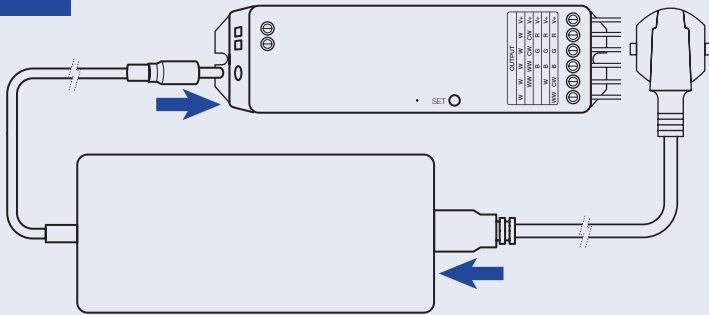
You can cut the LED strip to your desired length. Only cut along the designated cut lines to avoid damage. Work carefully to maintain the functionality of the LED strip.

3 Connecting the Controller



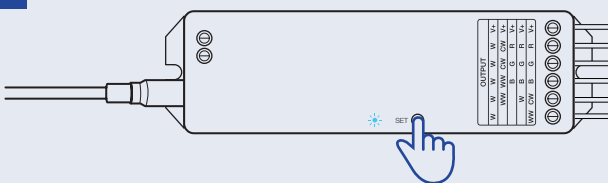
Connect all wires from the LED strip to their corresponding ports on the controller. Use a flat-head screwdriver for this.

4 Connecting the Power Adapter



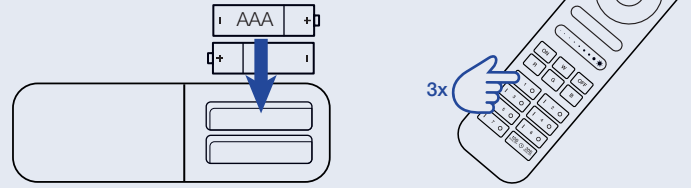
Connect the power adapter to the controller. Then, plug the power cable into the power adapter.

5 Testing the Connection



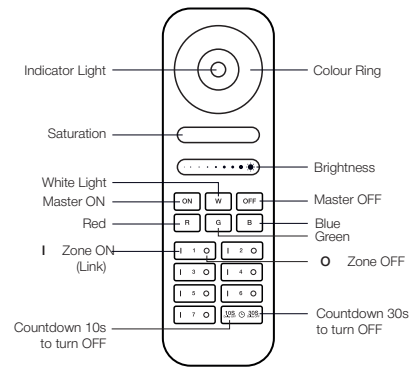
Ensure the power cable is connected to a working power outlet. Then, press the **SET** button on the controller to activate until the status light turns blue. The LED strip should now light up.

6 Pairing the Remote Control

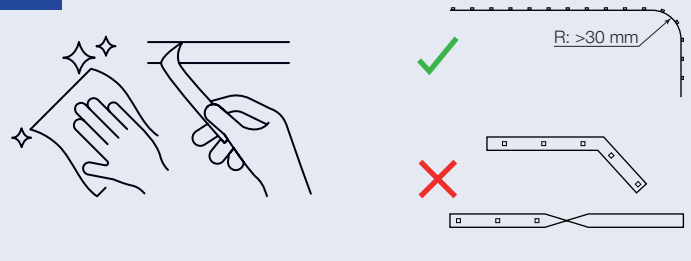


Insert two AAA batteries into the remote control. Turn off the lights by unplugging the power cord from the outlet for 10 seconds. Then, plug the power cord back into the outlet. Within 3 seconds of restoring power, press the **I zone** button on the remote control three times in quick succession. The pairing is successful when the LED strip blinks slowly three times.

If the LED strip does not blink, the pairing has failed. In this case, repeat step 6. Note: Pairing cannot be redone once a successful pairing has been established.



7 Mounting the LED Strip



Prepare the surface where you will mount the LED strip. Ensure the surface is smooth, non-porous, and free from dust and grease. Use the 3M adhesive strip on the underside of the LED strip to mount it to the surface.

Storage and Maintenance

Store the LED strip in a dry environment at temperatures between 0 and 30°C. Ensure that the LED strip remains free from dust. Maintain the LED strip by regularly wiping it with a dry, soft cloth. Do not use damp cleaning agents.

Disposal

The LED strip should not be disposed of with household waste. For responsible disposal, the LED strip should be taken to a collection point for electronic equipment.

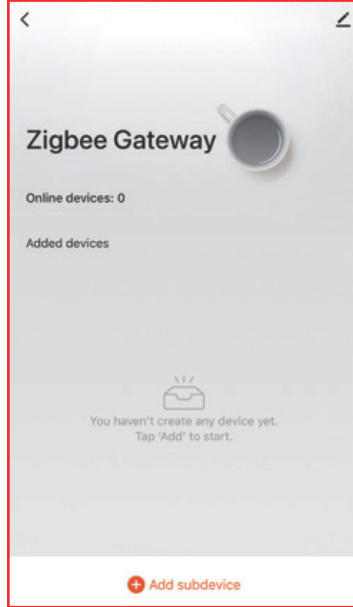
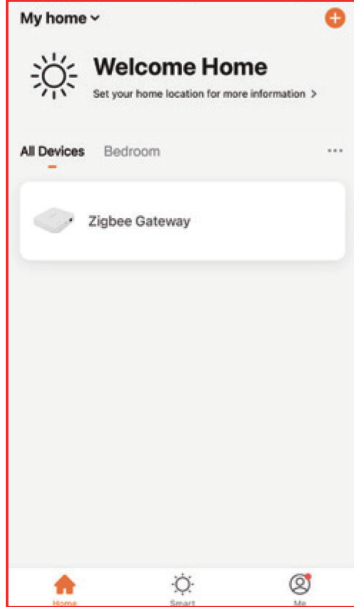
Zigbee 3.0 Gateway Instructions (5G Router not supported)



Ensure the Zigbee 3.0 Gateway is added into the Tuya Smart App.

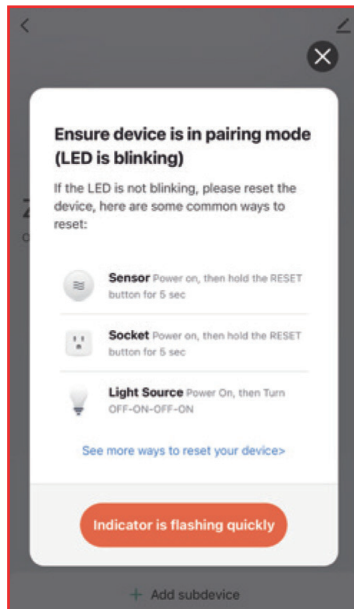
1 Tuya Smart App Control Instruction

1. Ensure the Zigbee 3.0 Gateway is connected to a working power outlet.
2. Press and hold the **SET** button until the indicator light starts flashing.

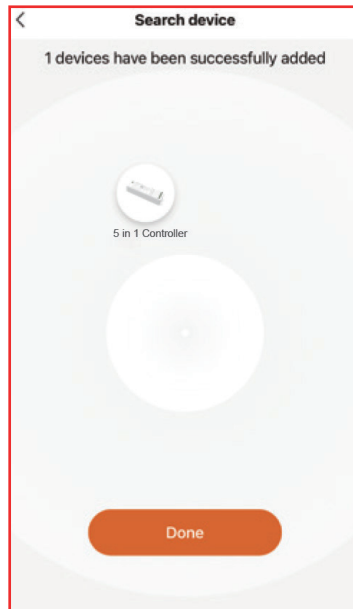


3. Open the Tuya Smart App and click on **Zigbee Gateway**.

4. Click **Add subdevice**.



5. Click **Indicator is flashing quickly**.



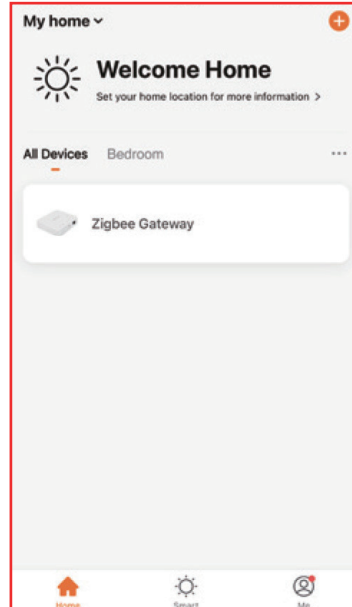
6. Click **Done**.

2 Adding the remote into Zigbee 3.0 Gateway

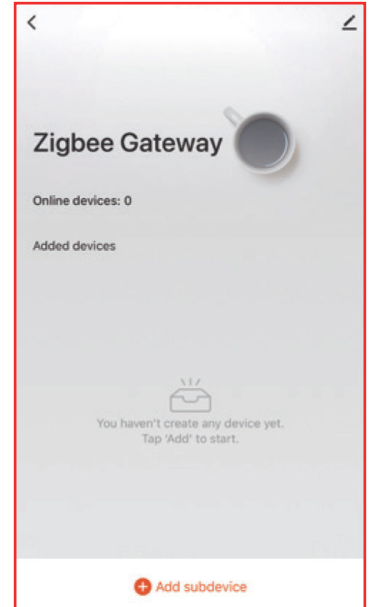
Zigbee lights can be controlled simultaneously via remote control, mobile app, or third-party voice assistants.



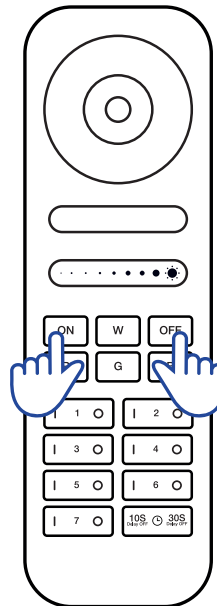
Ensure the Zigbee 3.0 Gateway is added into the Tuya Smart App.



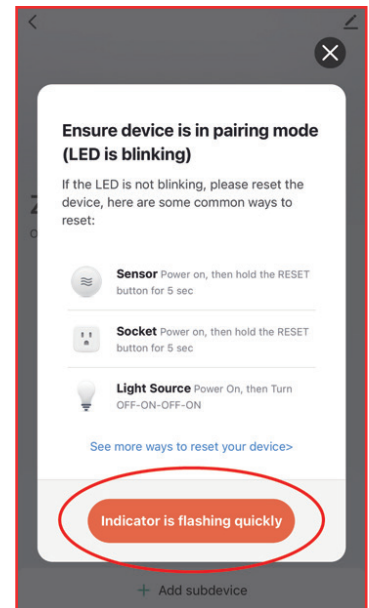
1. Open the Tuya Smart App and click on **Zigbee Gateway**.



2. Click **Add subdevice**.



3. Press and hold the **ON** and **OFF** button at the same time until the indicator light of the remote starts flashing.



4. Click **Indicator is flashing quickly**.
5. Click **Done**.

3 Optional: Alexa, Google Home & Philips Hue

Alexa Voice Control Instruction

The following Amazon Echo and eero devices have built-in smart home hubs that seamlessly connect and control Zigbee smart devices:

- Echo 4th generation
- Echo Plus
- Echo Show 10 (all models except 1st generation)
- Echo Studio
- eero 6 and eero 6+
- eero PoE 6
- eero PoE gateway
- eero Pro 6E and eero Pro 6
- eero Max 7

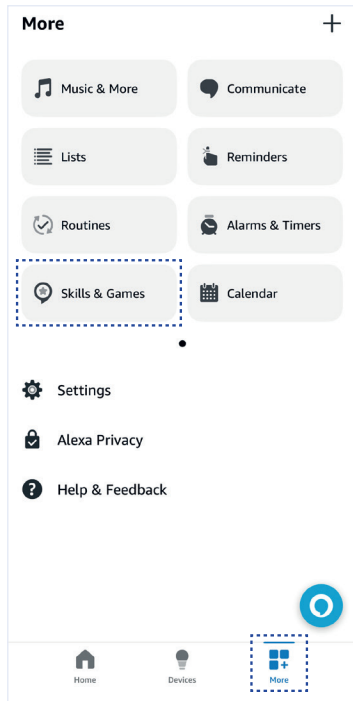
You can connect directly to your Amazon device by following the steps below.

1. Ensure your controller is connected to a working power outlet.
2. Press and hold the **SET** button until the indicator light starts flashing.
3. Say, **"Alexa, discover devices,"** to your Amazon device. Wait for Alexa to find your controller; once discovered, voice control will be activated.

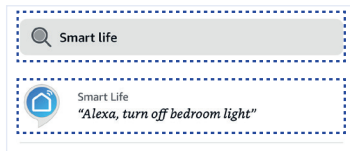
If your Amazon device does not support the Zigbee 3.0 protocol, follow the steps below.



Ensure the Zigbee 3.0 Gateway is added into the Tuya Smart App.



1. Open the Alexa App.
2. Click **More** on the bottom right corner.
3. Click **Skills & Games**

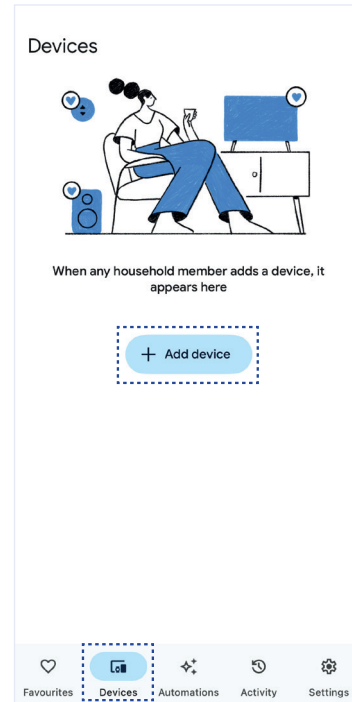


4. Click Q on the top left corner.
5. Typ in "Smart life" and search.
6. Select "Smart Life" and follow the instructions to finish configuration and start voice control.

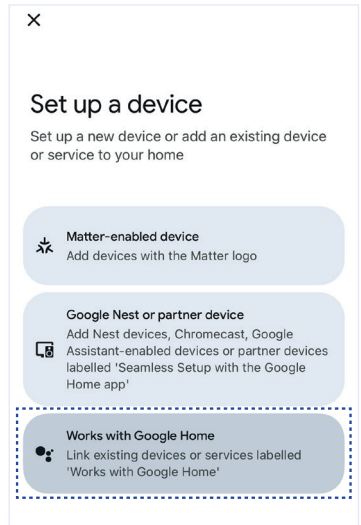
Google Home Voice Control Instruction



Ensure the Zigbee 3.0 Gateway is added into the Tuya Smart App.



1. Open the Google Home App.
2. Click on **Devices** on the bottom of the page and then click on **+ Add device**.



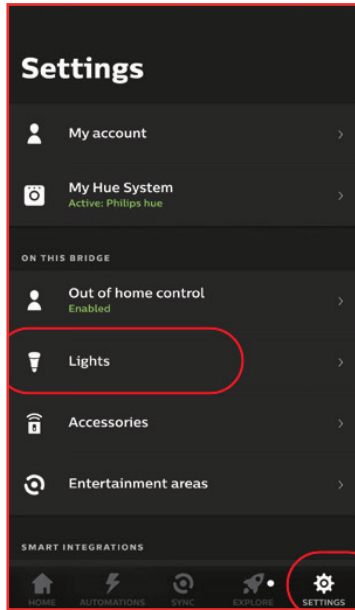
3. Click **Works with Google Home**.



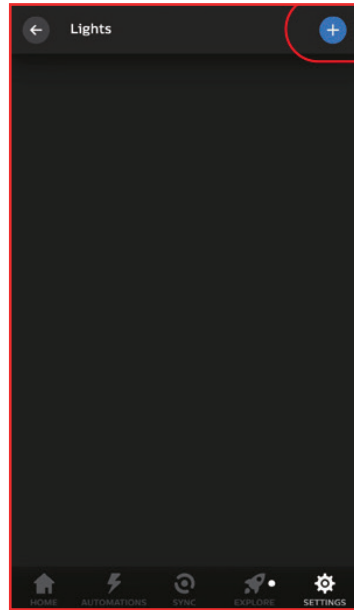
4. Click Q on the top right corner.
5. Typ in "Smart life" and search.
6. Select "Smart Life" and follow the instructions to finish configuration and start voice control.

Philips Hue Control Instruction

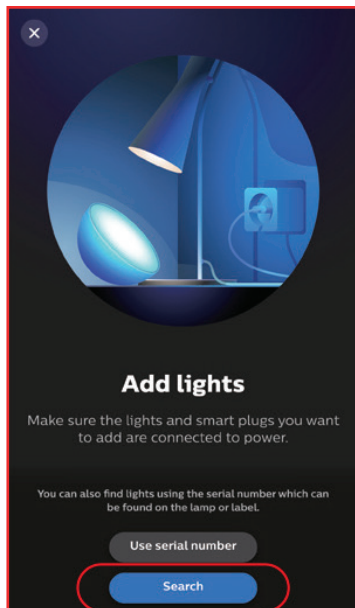
1. Ensure the controller is connected to a working power outlet.
2. Press and hold the **SET** button until the indicator light starts flashing.



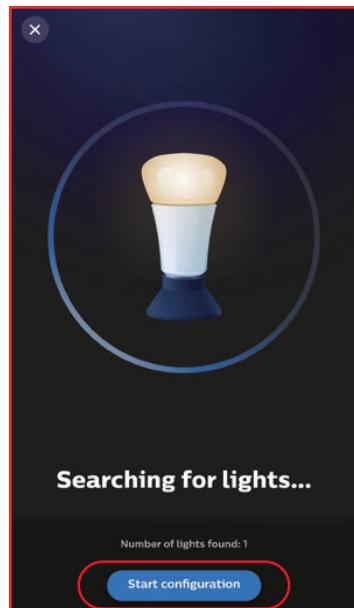
3. Open the Philips Hue App. Click **SETTINGS** and click **Lights**.



4. Click **+** on the top right corner.



5. Click **Search**.



4. Click **Start configuration** and follow the app instruction to complete configuration.